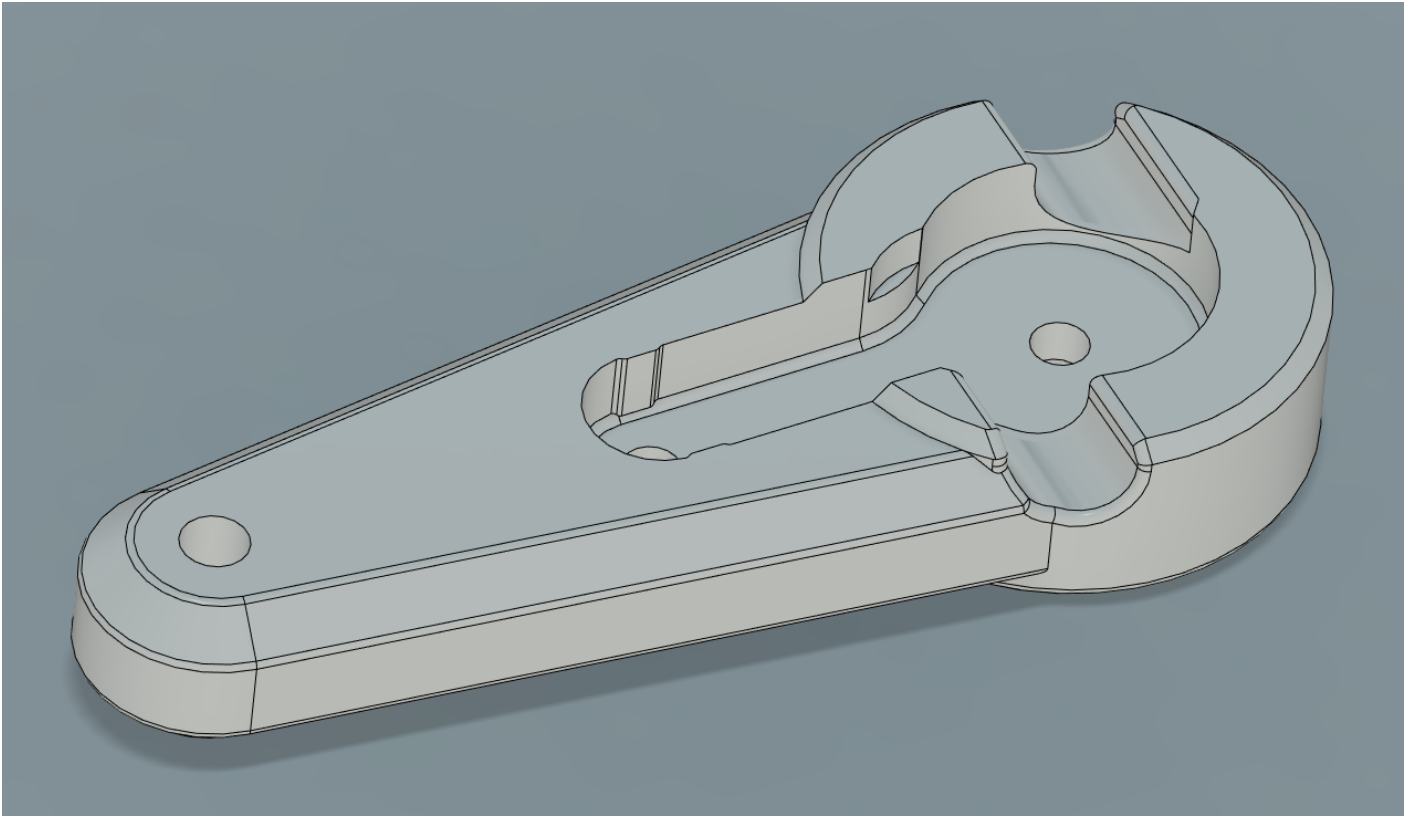


SR6 Beta1 Horny Arms



These are almost identical to the stock SR6 Beta 1 arms with the following differences:

Servo horn screw access

Slightly tighter tolerances (0.2mm on each side) at the end of the horn, for less wobble.

STLs:

<https://www.patreon.com/posts/sr6-beta1-arms-58451637> (free)

BOM:

None (plastic only)

Revision #1

Created 17 March 2025 11:31:44 by Zimaniac

Updated 17 March 2025 11:31:44 by Zimaniac