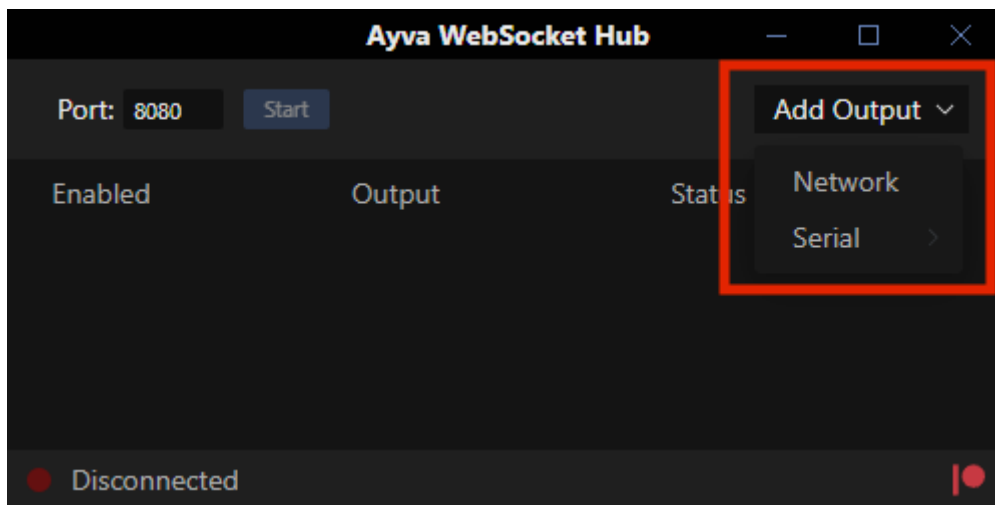
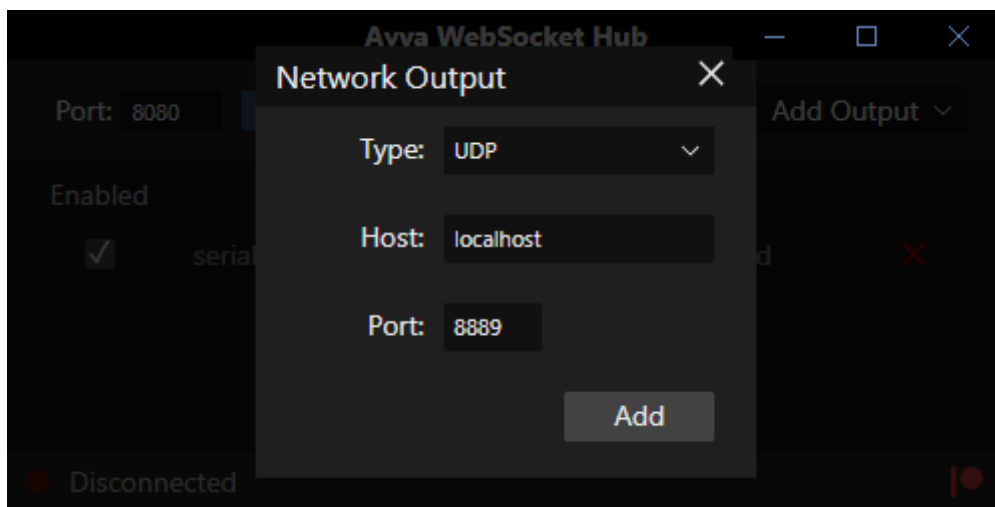


Output Types



There are two main types of outputs: **Network** and **Serial**.

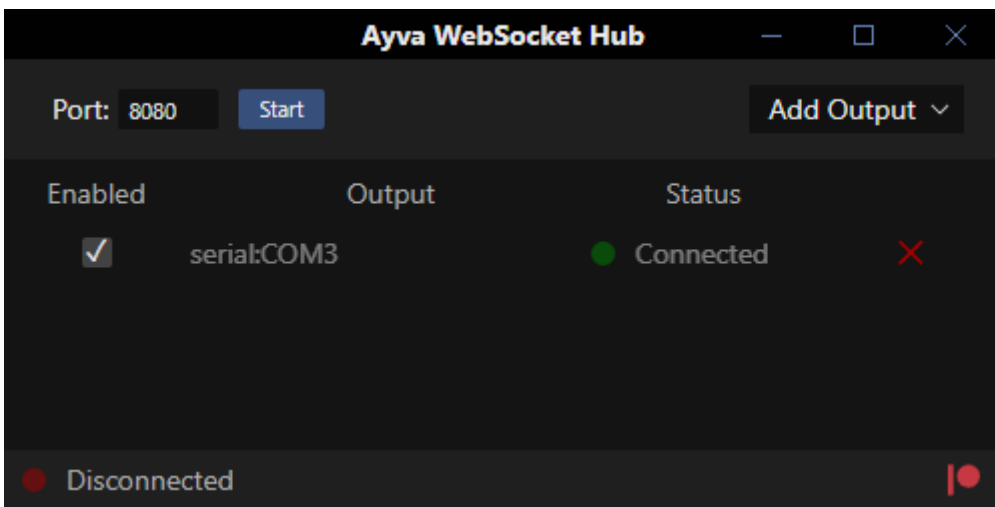
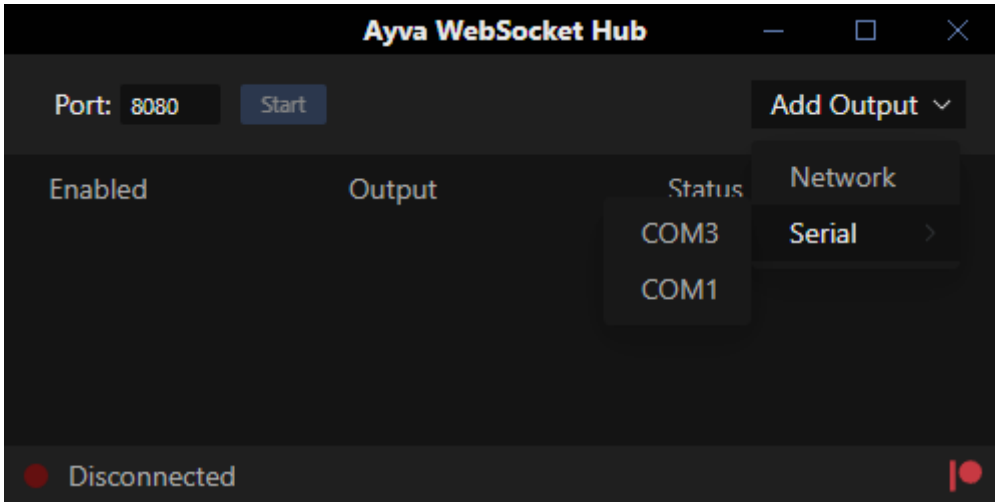
Network



Network outputs enable connections to devices or software via [TCP](#) or [UDP](#) protocols. In TCP mode, Ayva WebSocket Hub attempts to establish a connection to a WebSocket at the `/ws` endpoint on the specified host and port. In UDP mode, packets are sent directly to the designated host and port. Note that because UDP is *connectionless*, a UDP output will always be displayed as *Connected*, even if no application or device is actively listening at the specified host and port.

TCP is typically used to connect to WiFi-enabled devices, while UDP is typically used to stream to a [Virt-a-mate](#) plugin such as [BusDriver](#) (though it can also be used for WiFi-enabled devices that support UDP).

Serial



Serial outputs facilitate device connections via the Serial protocol, typically through USB. However, they can also operate over [virtual serial ports](#) that emulate physical connections for other protocols, including Bluetooth Classic.

Revision #6

Created 22 February 2024 18:31:40 by Sorites Paradox

Updated 24 February 2024 13:31:22 by Sorites Paradox